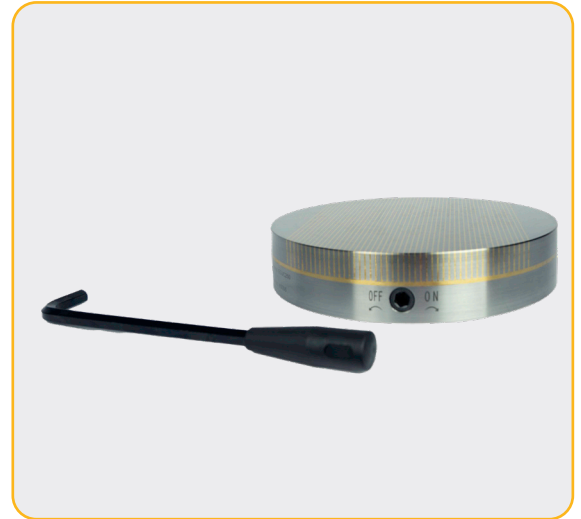


Circular Universal Chuck range provide all-round performance and durability.

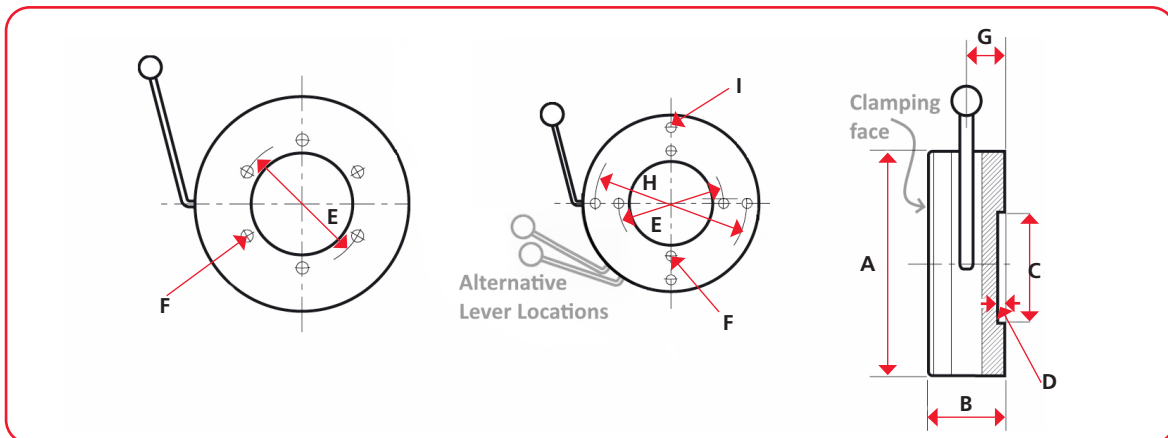
Features

- Universal pole pattern Pole Pitch of 1mm Brass & 3mm Steel
- Top plate concentrates magnetic energy on to the chuck face
- The chuck top plate can be partially magnetised to aid the correct positioning of the workpiece
- Universal pole pattern to allow for a wider range of thicknesses of material to be clamped
- On thinnest materials, the achievable clamping force is reduced
- Up to 80N/cm² maximum holding force (depending on material and part - subject to application)
- Threaded fixing locations on rear side
- Supplied with removable handle



Product Number	A mm	B mm	C mm	D mm	E mm	#1	F	G mm	#2	H	I	Weight kg
ECUC100	100	48	N/A	N/A	70	2	M6	N/A	N/A	N/A	N/A	3
ECUC125	125	48	80	3	95	4	M6	N/A	N/A	N/A	N/A	5
ECUC160	160	48	100	3	120	4	M6	N/A	N/A	N/A	N/A	9
ECUC200	200	52	120	4	160	4	M8	N/A	N/A	N/A	N/A	13
ECUC250	250	52	160	4	180	4	M8	N/A	N/A	N/A	N/A	20

Key			
A	Outside diameter	G	Handle distance
B	Height	H	Outer PCD(2)
C	Recess diameter	#1	Number of holes in PCD1
D	Recess depth	I	Diameter of holes (in PCD2)
E	Inner PCD(1)	#2	Number of holes in PCD2
F	Diameter of holes (in PCD1)		



For further assistance, please contact sales@eclipsemagnetics.com

Although we have made every attempt to provide accurate information, we do reserve the right to change any of the information in this document without notice.

We cannot accept any responsibility or liability for any errors or problems caused by using any of the information provided.

Conversions Guide:-

1kg ≈ 2.204lb ≈ 9.806N
 1lb ≈ 0.453kg ≈ 4.448N
 1N ≈ 0.101kg ≈ 0.224lb

10mm ≈ 0.393in (≈ 25/64in)
 1in ≈ 25.4mm

(the above conversion values are rounded down)

